

BAKER STREET & GLOUCESTER PLACE

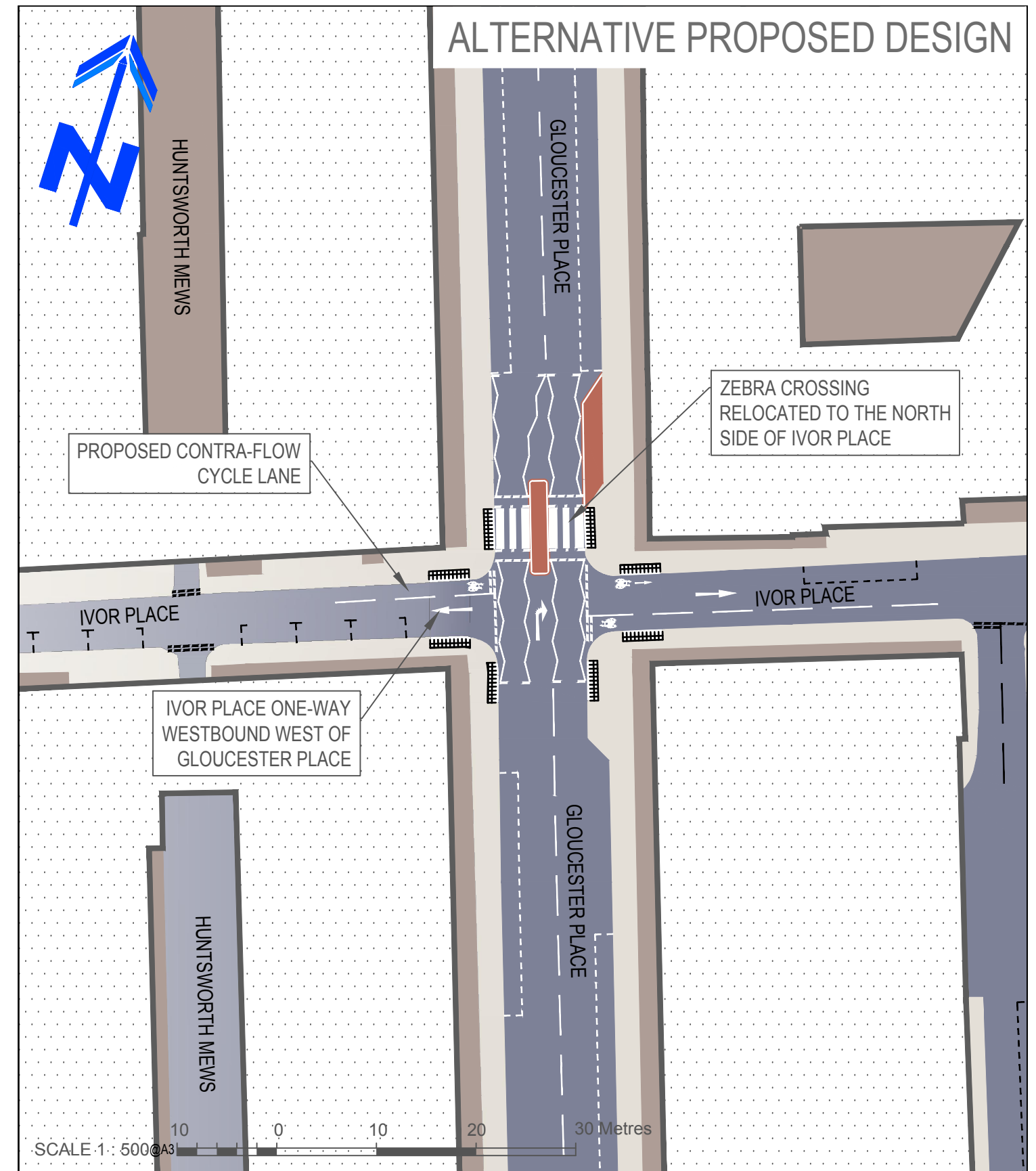
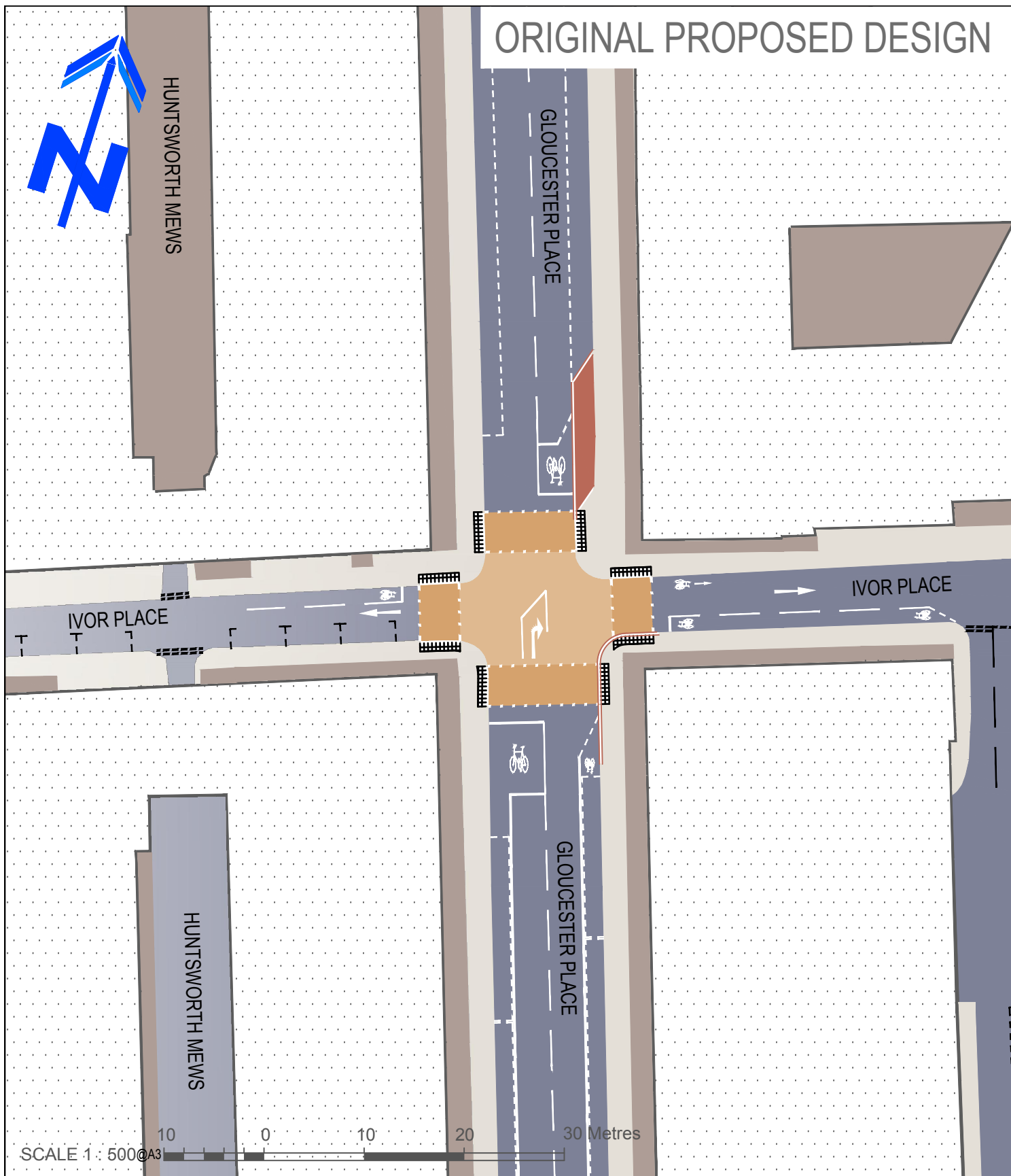
**TWO WAY**

TWO WAY PROJECT

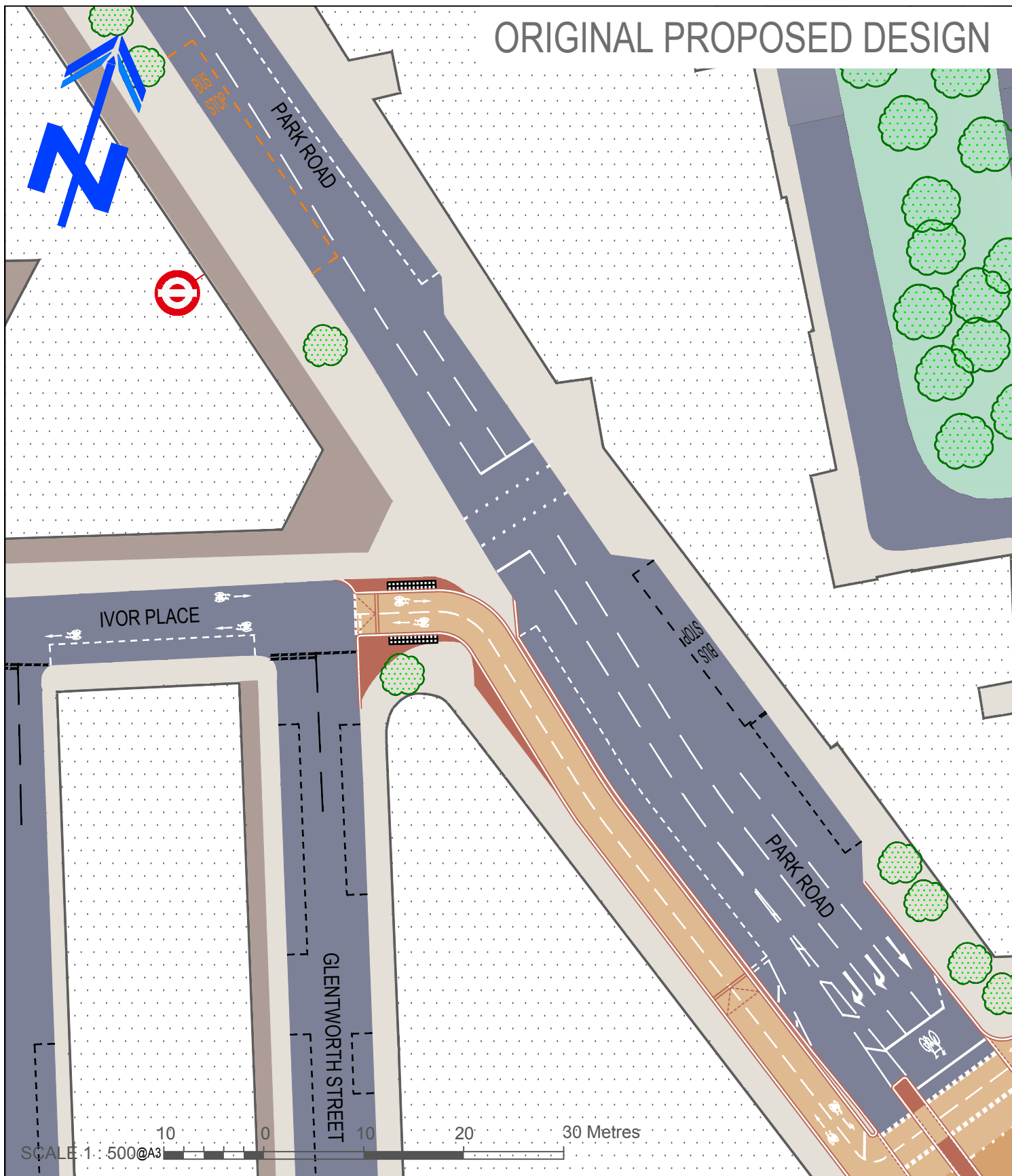
**BAKER STREET & GLOUCESTER PLACE TWO WAY PROJECT**

**PUBLIC CONSULTATION 2016**

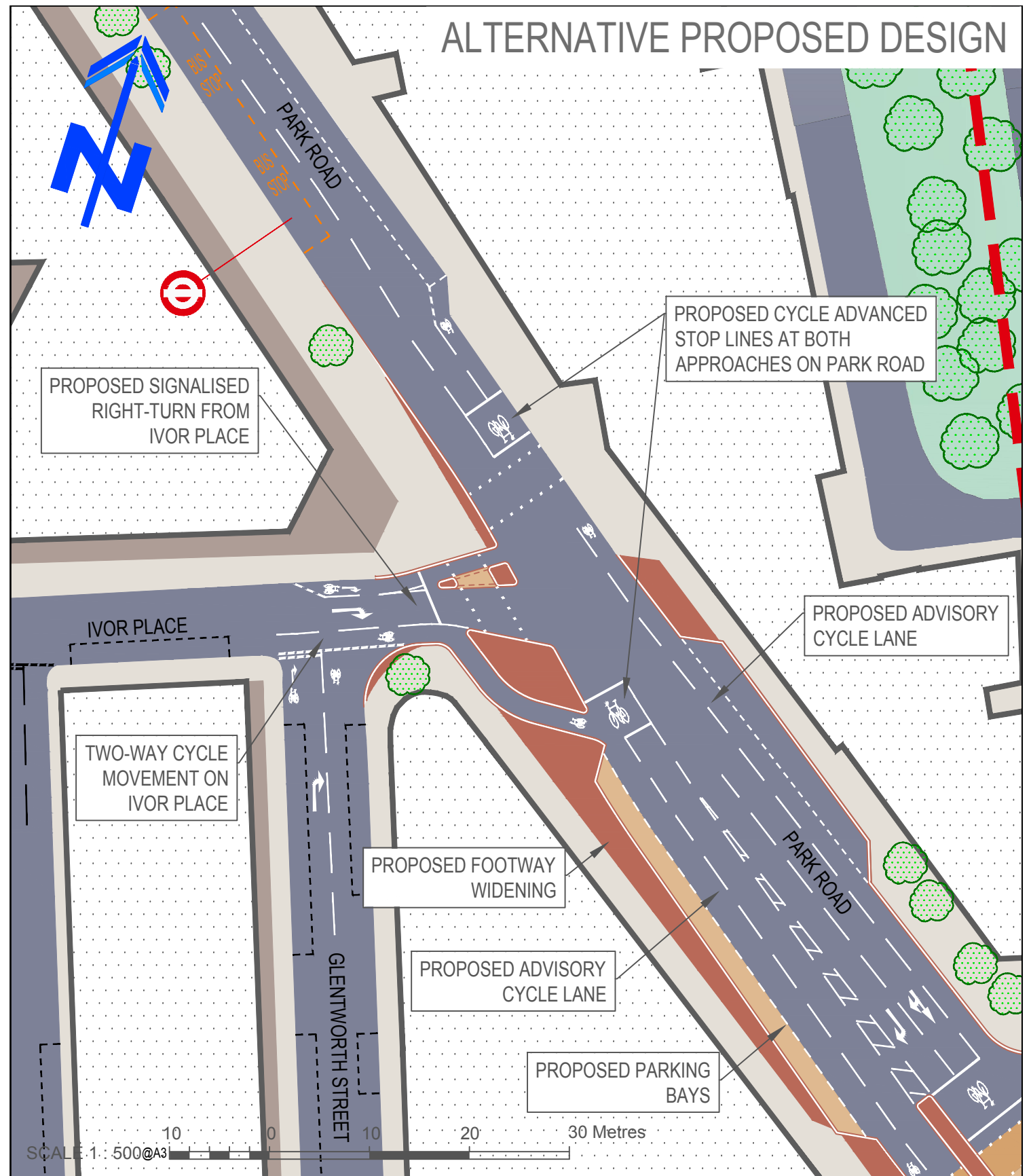
TAUNTON PLACE / A41 GLOUCESTER PLACE



# ORIGINAL PROPOSED DESIGN



# ALTERNATIVE PROPOSED DESIGN



BAKER STREET & GLOUCESTER PLACE

# TWO WAY

TWO WAY PROJECT

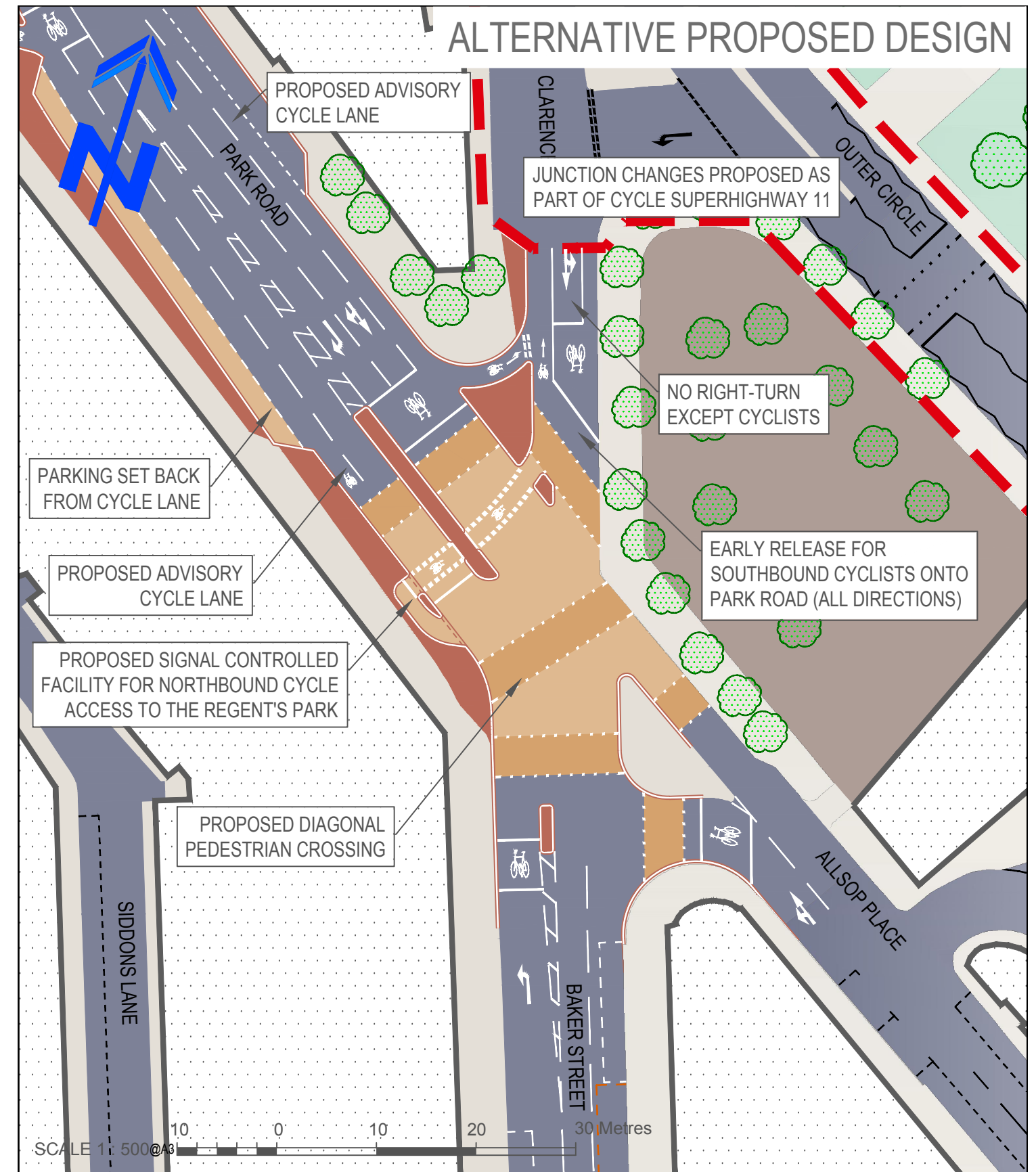
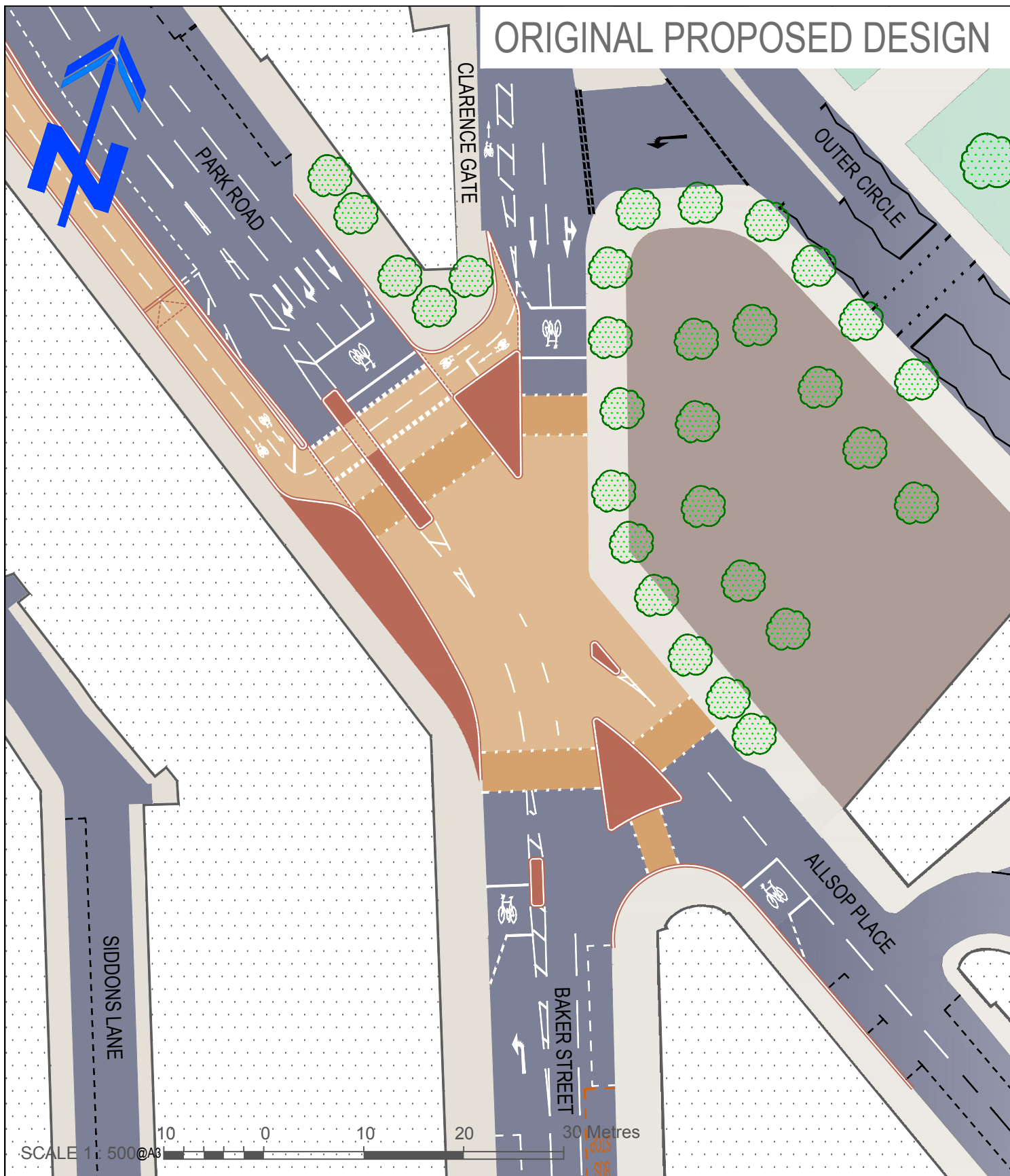
## BAKER STREET & GLOUCESTER PLACE TWO WAY PROJECT

### PUBLIC CONSULTATION 2016

IVOR PLACE / A41 PARK ROAD



City of Westminster



BAKER STREET & GLOUCESTER PLACE

**TWO WAY**

TWO WAY PROJECT

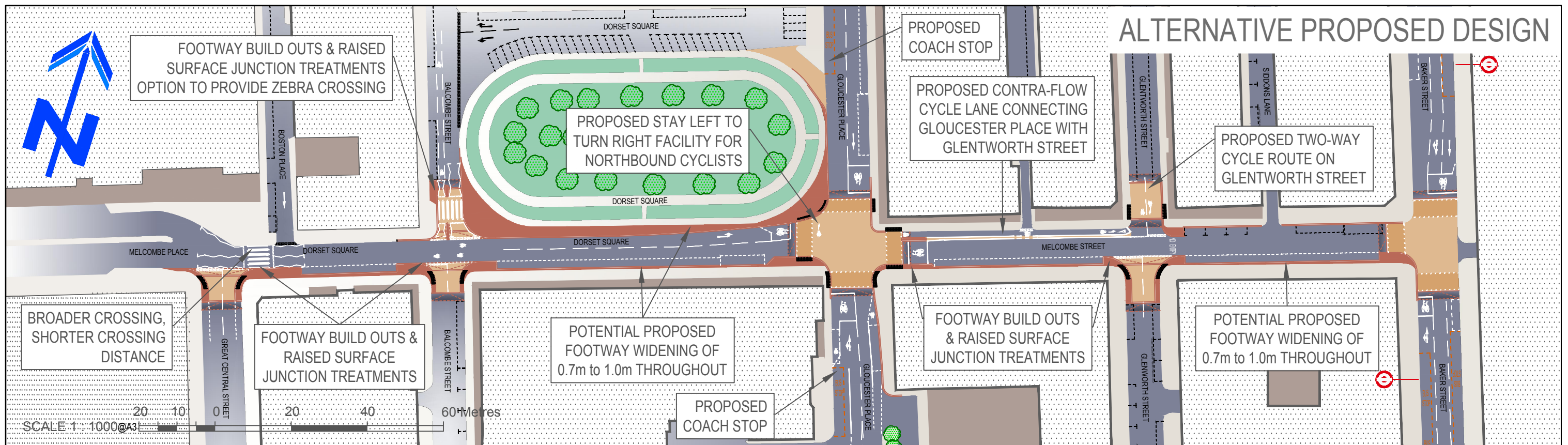
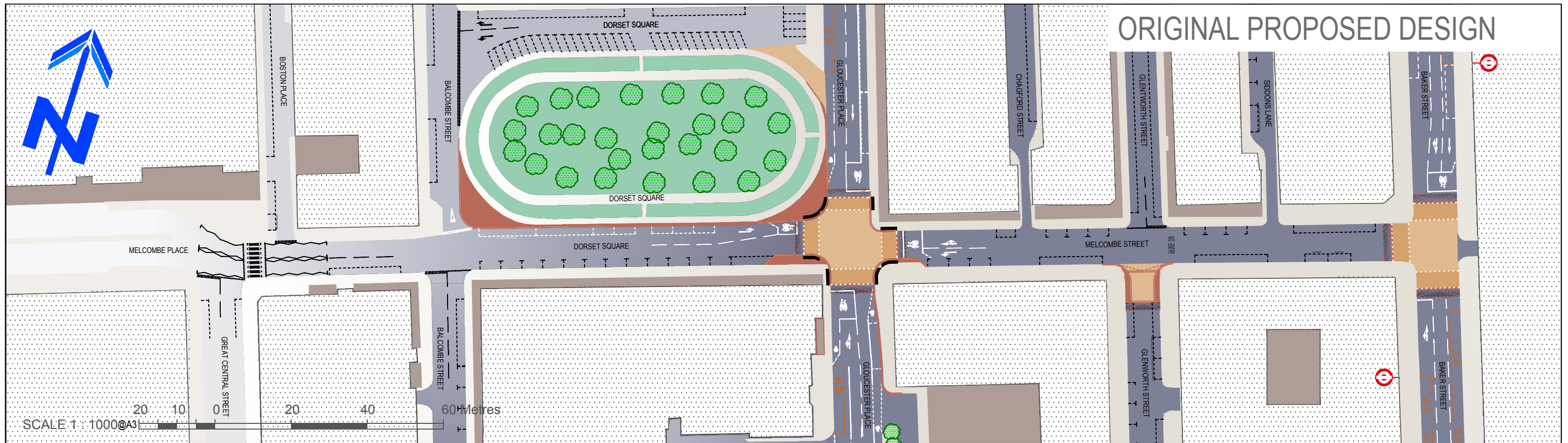
## BAKER STREET & GLOUCESTER PLACE TWO WAY PROJECT

### PUBLIC CONSULTATION 2016

#### CLARENCE GATE / A41 PARK ROAD



City of Westminster



BAKER STREET & GLOUCESTER PLACE

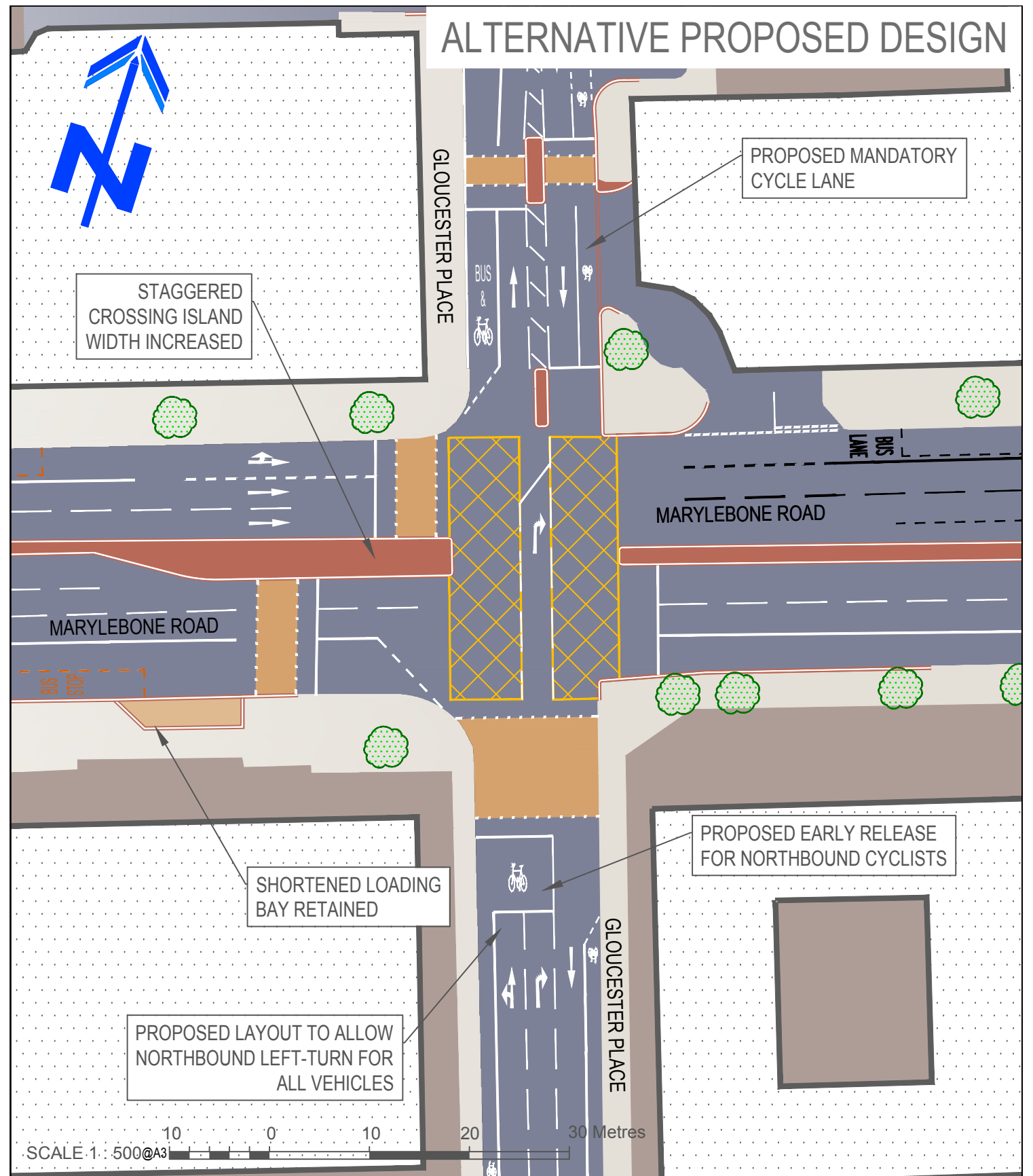
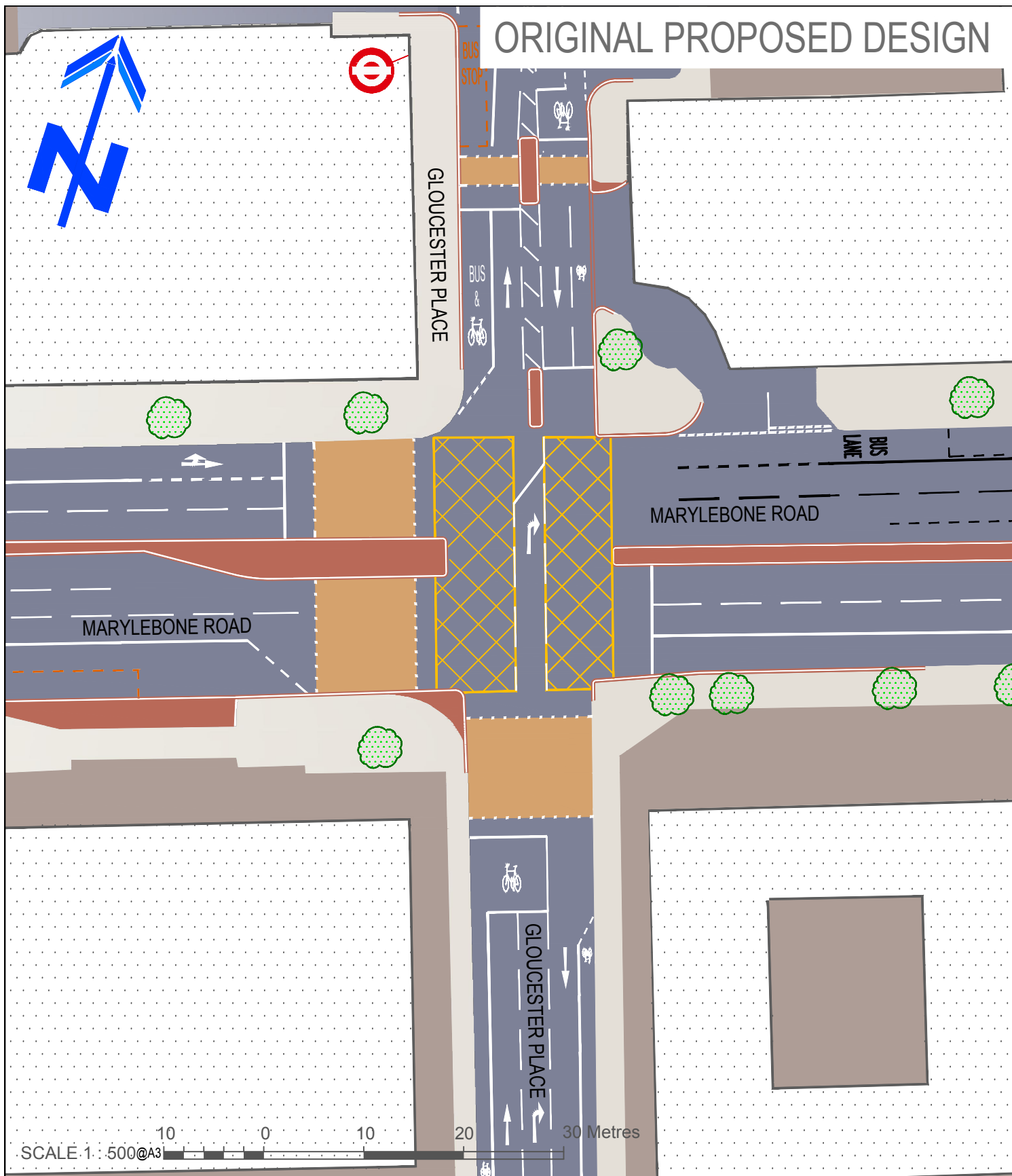
**TWO WAY**

TWO WAY PROJECT

**BAKER STREET & GLOUCESTER PLACE TWO WAY PROJECT  
PUBLIC CONSULTATION 2016**

MELCOMBE PLACE / DORSET SQUARE / MELCOMBE STREET





BAKER STREET & GLOUCESTER PLACE

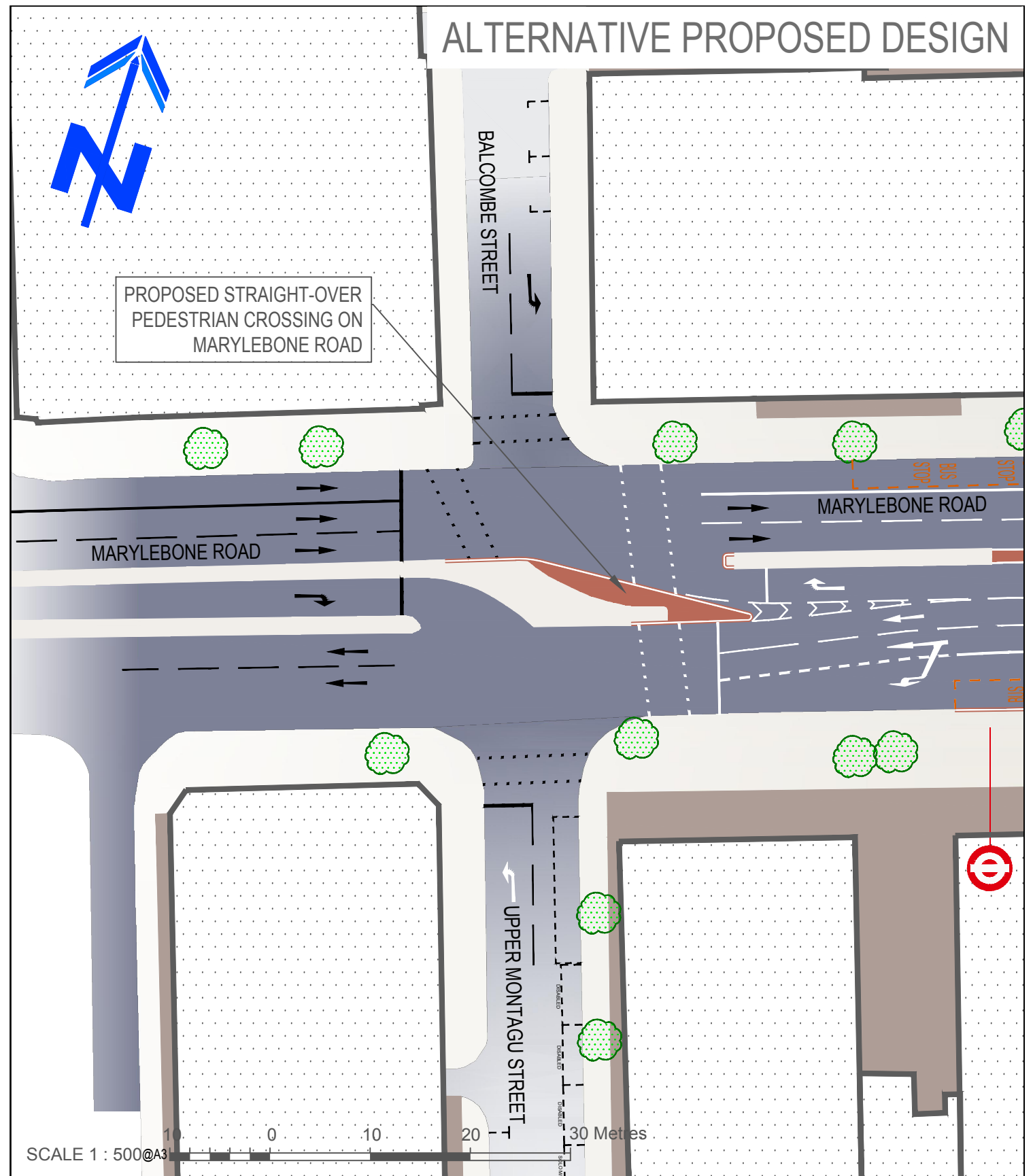
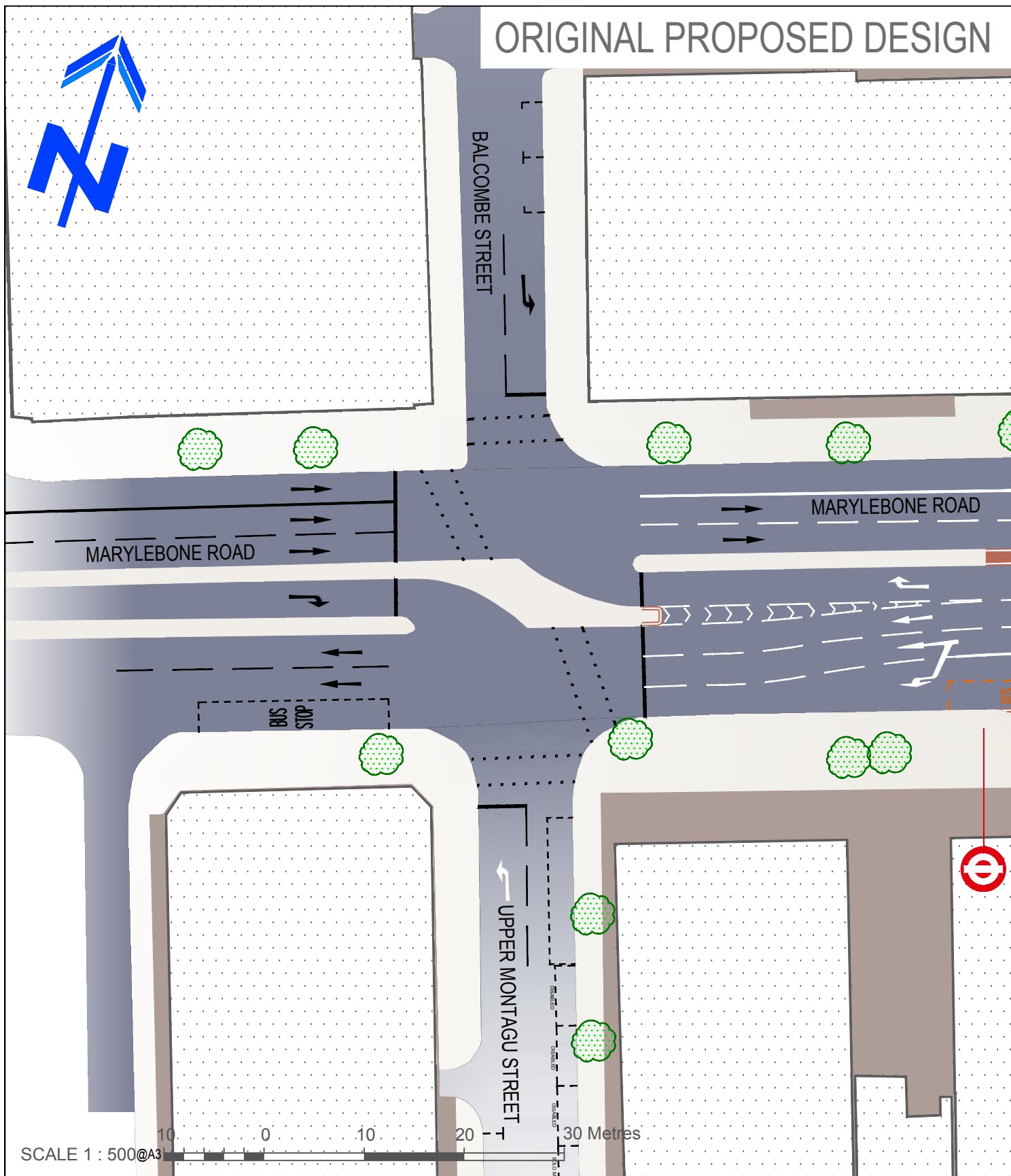
**TWO WAY**

TWO WAY PROJECT

**BAKER STREET & GLOUCESTER PLACE TWO WAY PROJECT  
PUBLIC CONSULTATION 2016**

A501 MARYLEBONE ROAD / A41 GLOUCESTER PLACE





BAKER STREET & GLOUCESTER PLACE

**TWO WAY**

TWO WAY PROJECT

# BAKER STREET & GLOUCESTER PLACE TWO WAY PROJECT PUBLIC CONSULTATION 2016

A501 MARYLEBONE ROAD / BALCOMBE STREET / UPPER MONTAGU STREET



